

NEWSLINE

SALE PRIMARY SCHOOL

NO. 545

Wednesday
January 29, 2025

Macalister Street, Sale
PO Box 59, Sale Vic 3850
Phone: 03 5144 5545
Email: sale.ps@education.vic.gov.au
Website: saleps.vic.edu.au

No. 01

'Maximising growth in the whole child – academically, socially and emotionally'

DATES TO REMEMBER

January

Friday January 31

- Foundation students commence today
- School Council Nominations Open

February

Wednesday February 5

- Foundation rest day

Friday February 7

- 4pm School Council Nominations Close

Wednesday February 12

- Foundation rest day

Friday February 14

- Grades 3-6 House Swimming Carnival

Monday February 17

- 2.00pm Parents & Friends AGM & General Meeting

March

Monday March 10

- Public Holiday

Wednesday March 26

- Parent/Teacher/Student Interview Day
(students attend for their interview time only)

April

Friday April 4

- Last day of Term 1, students dismissed at 2:15pm

PRINCIPAL'S REPORT

CHRIS MALONE

Welcome Back

On behalf of all staff at Sale Primary School No. 545, we warmly welcome all students and their families to what will be a very exciting year ahead.



We also welcome our new students and families throughout the school and a special welcome is also extended to our 2025 Foundation (Prep) students who will commence this coming Friday.

It was fantastic to see so many smiling faces eager to return to school as the students arrived at school today. There was a genuine buzz about the place with lots of excitement.

We look forward to a positive and rewarding relationship in the years to come.

All staff continue to work hard in ensuring that we provide the best learning experiences for all of our students. Please speak to your child's teacher if you have any questions.

Welcome New Staff

We extend a warm welcome to our new teaching and education support staff. The new 2025 classroom teachers are Tori Barton and Scott Wegener.

We also welcome the return of classroom teachers Charlotte Burgess and Trish Piddington.



Bike Shed

Our bike shed has a secure fence to protect student's scooters and bikes. Please use the gate closest to Victoria Park to access the school and always lock your bike/scooter.

Annual Privacy Reminder

Our school collects, uses, discloses and stores student and parent personal information for standard school functions or where permitted by law, as stated in the [Schools' Privacy Policy](#)

Please take time to remind yourself of the school's collection statement, found on our website at www.saleps.vic.edu.au.

For more information about privacy, see [Schools' Privacy Policy](#)

Hours of Supervision

Parents are reminded that the hours of supervision in the yard are from 8:45am until 3:30pm. As such, parents are encouraged to ensure their child/ren arrive at school **no earlier than 8:30am** and that they are prompt in collecting their child/ren at 3:15pm. Your support in this matter is appreciated as we work together to ensure the safety of your children.

Late Arrivals and Students Picked up early

Classrooms open at 8.45am and classes begin at 9:00am. It would be appreciated if students could be here on time. We understand that there are occasions where late arrival is unavoidable, but learning starts at 9:00am and a late arrival means lost learning and a disruption to the learning environment and this needs to be avoided as much as possible. Parents need to be aware that students who arrive late to school **MUST come via the office to receive a late slip via Compass to have their arrival at school recorded.**

Similarly parents/guardians must have their child signed out via the Compass kiosk at the school office if they need to pick their child/ren up early from school. If children are returned to school, their return must also be recorded at the school office via the Compass kiosk.

Only those people nominated by parents as emergency contacts are able to collect children from school.

Children who are collected late (after 3.30pm) will be directed to the school office by yard duty teachers and will need to be collected by parents from the office.

Student Attendance: 'It's Cool to be at School!'

In order for students to maximise their learning opportunities at school, they need to attend on a regular basis.

We are fully aware that there are times when students will be absent due to illness or unavoidable family commitments but hopefully, these would be rare events and that our students will be in attendance every other school day.

Slogans such as "It's Cool to be at School" and "It's not OK to be Away" will be enforced at the school in 2025.

We ask that parents notify the **school office** via phone, email (sale.ps@education.vic.gov.au), Compass App, a note or in person confirming your child's absence on any given day so that we know that the absence is approved, as well as reassuring the school that your child is safe and in your care on a normal school day. **Please do not message classroom teachers of your child's absence.**

We will be following up on all unexplained absences at 10.00am via Compass.

We ask parents to support this approach by communicating clearly with the school office when your child is going to be absent prior to 9.45am if possible.

Parent Participation at Sale Primary School

A feature of an effective school can be measured in part on parent participation and input. At 545 we welcome and encourage parent participation as it supports everything we do. As the year progresses, parents will be given many opportunities to be involved in the school and I encourage all parents to offer their assistance where and when possible. Please consider your involvement as follows:

- Parents and Friends Committee
- School Council
- Garden Party Committee
- Breakfast Club
- Camps and Excursions
- Sporting Events
- Classroom Programs (as negotiated with classroom teachers)
- School Events (Concerts / Theme Days / Family Nights etc.)

NB: Working With Children Check will be required

Compulsory School Uniform

The school guidelines make it very clear as to the expectations of all students in regards to school uniform. It is expected, even at this early stage of the year, that all students adhere to these guidelines and that they are in full school uniform, including a school hat and

predominantly black shoes. Staff will contact the parents of those students who are not in uniform and do not have a note from home explaining this.

Please note - Foundation-Grade 2 students can wear 'alternate runners' on their physical education day and remain in these shoes for the day to avoid changing.

Student Management

Over the coming weeks, all students will be discussing with their teachers our approach to Student Management.

When discussing behaviour expectations, teachers and students will explore:

- ***The types of positive behaviours we expect from each other throughout the school and the positive reinforcements that will follow when students exhibit these positive behaviours (GREEN).***
- ***The types of behaviours that students will be required to self-correct and the types of strategies they can use to do so (ORANGE).***
- ***The types of behaviours that will not be tolerated at school and the types of consequences that will follow if students behave in an unacceptable manner (RED).***

School Council Elections

School Council elections are held in Term 1 of each school year. Nominations for the School Council of the Sale Primary School No. 545 will open **this Friday January 31** and will close at **4.00pm on Friday February 7.**

We have four elected parent category members up for re-election, as well as two elected Department of Education employee category members.

If you would like to stand for School Council, or would like to nominate someone, please contact the school office for further information.

Bus Travellers

We have many students who use buses before and after school. Bus travellers need to report to Mr Hayman or Mr Jondahl each afternoon of travel at 3.10pm at the bus shelter.

These students will be checked off each afternoon as they board their buses. Can parents please contact the school office if there are changes to their children's travel arrangements.

We ask that parents of any Foundation students who will be travelling to and from school via bus, to please see the bus driver to discuss pick-up and drop-off destinations.

Parents are also advised that they need to inform the office and complete relevant "Application to Travel" forms if they need their child/ren to use "Out of Town Bus Services" that operate through the McMillan Park interchange. The school needs to be informed of the Bus Route and Number and the frequency of travel.

Student Information Forms – Update details

Please notify the office if there have been any changes to your telephone number, address, medical issues, emergency contacts or work phone numbers. It is **vital** that the school has this information for our records. You can do this by either phoning the office (51 445545) or email sale.ps@education.vic.gov.au, or simply drop in.

Messages for Students

Where possible, we ask that if parents wish the office staff to pass a message on to their child/ren, they do so early enough so that the message can be relayed at either the recess (10.30am-10.50pm) or lunchtime (1.00pm-1.35pm) breaks.

This will minimise interruption of phone calls and announcements for teachers and students during class time.

Obviously there will be instances where this is not possible, but we do ask for parent cooperation with this request.

Mobile Phone/Smartwatch Policy

Mobile phones and smartwatches are becoming commonplace amongst children. In line with the Department of Education's policy on student use of mobile phones, we have a policy to protect the personal privacy of students, staff and parents, and to ensure that the use of electronic devices such as mobile phones and smartwatches is not disruptive to the learning environment at school.

As a consequence, the following applies:

- Only students with a valid or compelling reason are to possess a mobile phone or other personal mobile device at school (to be negotiated with Principal).
- Students who bring mobile phones and other personal mobile devices to school must have them switched off and securely stored at the school office.

Mobile phones and smartwatches are considered valuable items, and are brought to school at the owner's (student, parent or carer's) risk. Please note that Sale Primary School does not have accident insurance for accidental property damage or theft. **If you require your child to have a mobile phone at school please obtain a copy of the Mobile Phone Policy and Personal Property Policy from the school office.**



Personal goods brought to school at owner's risk

The Department of Education (DoE) has asked all schools to remind parents that any property brought to school by students is NOT insured and DoE, or the school, do not accept any responsibility for any loss or damage. As a result, the school actively discourages students bringing expensive or precious toys, sporting equipment, mobiles phones (as mentioned previously) etc. to school.

Student Accident Insurance

The Department of Education have requested that all schools inform parents about details regarding DoE coverage of medical expenses of students injured at school or during school activities (eg. excursions and camps).

- DoE **will not** pay for the injury of a student who is injured in an **accident** at school or during a school activity (unless the injury is caused by negligence of DoE, School Council, employee or volunteer)
- Therefore, in cases where a student has been injured in any accident, the injured person (or their parent or guardian) is responsible for the cost of medical treatment. This includes the cost of transport to a medical facility or their home via ambulance.

Information regarding companies that provide individual student insurance can be obtained from the school office.

Severe Allergies & Asthma

The Sale Primary School staff are extremely aware of their duty of care when managing the students in their care.

There are students in our school who have allergies to nuts, sesame, milk, dairy, eggs and dogs.

These allergies can result in students having an anaphylactic reaction (a potential life threatening situation) if exposed to these foods.

Therefore, we would appreciate your assistance in maintaining a safe environment for all of our

students through education. Please speak to your child about the importance of:

- Washing hands (so that disease, infection or possible food is not transferred)
- Students only eating their own food (not sharing water bottles, drinks, snacks etc., and that lunch boxes, drink bottles, etc. are clearly named).
- Clearly labelling ingredients of any non-packaged food that is brought in for a special occasion so that students and staff are aware.

All students with asthma must present a signed copy of the 'School Camp and Excursion' Asthma Foundation form ON THE DAY of any excursion or camp (a copy of which is available from the school office). Excursions include swimming, local sports or any other general excursion or camp.

If your child suffers from asthma, anaphylaxis or any other medical condition, the school **MUST** have a recent copy of the action plan as prepared by a doctor.

We appreciate your support in these matters.

Rapid Antigen Tests

We have a stock of Rapid Antigen Tests available from the school office.

If children are experiencing flu like symptoms, please test and stay home until well.

NEWSLINE

Our Newsline is produced each Tuesday.

Parents are able to access a copy in the following ways:

- Via the school's communication app "Compass"
- Via the school's website at www.saleps.vic.edu.au
- Via a link on our Facebook page to the website, or
- A hard copy can be collected by parents or students from the school office.

We are encouraging parents to preferably access Newsline via the Compass App (which will include full colour photographs) or to view an edited version (without photographs) on our school's website at www.saleps.vic.edu.au which will be uploaded every Tuesday afternoon.

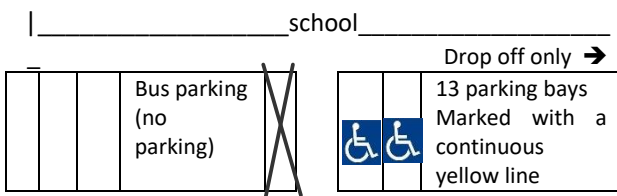
PARKING AROUND OUR SCHOOL

Parking in Dundas Street – Drop off Zone



As we have a number of new families to 545 this year, many may not be aware that there is a drop-off zone in Dundas Street, where cars cannot be left unattended. It operates in the 13 car spaces (marked with a yellow line in the middle of the road) north of the 2 disabled parks in Dundas Street. Parents need to also be aware that they cannot use the bus parking zone to pick up or drop off students.

Just to re-affirm parking regulations in Dundas Street.



Please note:

Bus zone



8.30am–9.00am & 3.00pm-4.00pm school days – No parking during these times.

Drop off zone

8.30am – 9.30am & 3.00pm -4.00pm

Parents are permitted to park for a maximum of 2 minutes and must remain within 3 metres of their vehicle at all times.



A driver must not stop at the side of a road marked with a continuous yellow edge line (the 13 parking bays in Dundas Street)

The shire traffic officers do monitor this area and will issue fines to cars left unattended in the 'drop off' zone, or if cars remain stationary in this area beyond the 2 minute timeframe.

There are also other parking restrictions that parents need to be aware are operating in Cunninghame Street. Parents are encouraged to drop their children off in Market Street (well back from the Market Street/Cunninghame Street T intersection) to allow them to continue using the Cunninghame Street crossing.

There is also a 'no parking' zone at the corner of Dundas and Cunninghame Streets (directly under the big tree). This has been established to ensure no vehicle or its occupants are positioned under the big red gum tree at any time.

Parents are reminded that there are plenty of parking spaces further up Cunninghame Street (outside of the Church) and Marley Street (adjoining Victoria Park).

PARENTS & FRIENDS NEWS JADE WILLOX PRESIDENT

A warm welcome to all families for the start of our 2025 school year.

Parents and Friends Annual General Meeting

The Parents and Friends Association's Annual General Meeting will be held on **Monday February 17 at 2.00pm** in the Parents & Friends 'Nest' followed by a general meeting. All parents and friends are urged and welcome to attend. Please consider taking on a position in 2025 or come along to add your support to those who do. All positions will be declared vacant and the following positions will be elected:

- President
 - Vice President
 - Secretary
 - Treasurer
 - School Council Representative
- Items to be discussed at the General meeting following the AGM will be as follows:
- Fundraising calendar 2025.
 - Special Food Days.
 - Raffles
 - Stalls
 - Other.

For further queries please contact Jade on 0400 926 621

MUSIC NEWS

PHIL BARTLETT



Hi everyone. I am really looking forward to another amazing year of music at 545.

Classroom Music

Classroom music at 545 involves lots of fun activities. From foundation to grade six, students learn about elements of music including melody, harmony, and rhythm. Students are involved in activities including singing, body percussion, bucket drumming, composition, guitar, ukulele, music theory, and the list goes on. Each student will attend music for one semester

Choirs

All choirs (Foundation, Junior, Middle and Senior) will commence this week. Students will be singing a great selection of songs including classic 'old school' hits and songs from the 2020's. Students will also be learning about important vocal technique, the discipline of rehearsal and the excitement of performance.

Taiko (Japanese Drumming)

Once again, we're going to be doing some exciting things in Taiko this year, and it promises to be lots of fun, with a bit of hard work thrown in. During Taiko, students will learn exciting rhythmic patterns, important drumming technique, movement and dramatic actions. Students who performed in Taiko last year, will automatically be part of the group this year. Students in grade four, five and six interested in being part of this amazing group, are welcome to come along to try-outs (day and time to be confirmed).

Rock Bands

Our Rock Bands will continue this year for grade five and six students (and possibly grade four, depending on numbers). The bands will be performing classic rock songs as well as the latest pop songs. We'll require drums, bass, guitar, keyboard and singers (there may be room for some extra instruments, depending on numbers). Auditions for the 545 Rock Bands will take place soon. Students are asked to listen out for announcements during the week.

Student Commitment

It is very important to note that students are expected to commit to a music ensemble for **THE**

ENTIRE YEAR. Students are also expected to attend **EVERY** rehearsal, arriving on time and remembering all equipment. All Foundation, Junior and Middle students will be part of choir.

Performances

Most of our 2025 ensembles and bands will be involved in performances throughout the year.

Once again, it's great to be back and I can't wait to get started!

SWIMMING CARNIVAL

BEN CHIVERS

PHYSICAL EDUCATION

Welcome to Health and Physical Education for 2025.



All grade 3-6 students will be programmed to compete in the 545 House Swimming Carnival on **Friday February 14** in either 50m or 25m races, or in the modified activity pool.

Due to pool unavailability, we will not be holding trials this year. A note will be going home to year 3 students and all new 3-6 students, for parents to complete regarding swimming ability.

We will be in need of **parent helpers** to assist with small tasks at the Swimming Carnival. To volunteer, please complete and return the form attached to the Swimming Carnival note which will be sent home this week, or contact myself directly at benjamin.chivers@education.vic.gov.au Copies of notes sent home with students will also be available on Compass, or from the office.

Health and Physical Education Lessons

Physical Education Lessons have resumed for 2025. Please ensure that your child wears shoes suitable for running and sports on the day of their HPE lesson.

Sun Protection

All students are required to bring their wide brimmed school hat to HPE lessons. Sunglasses are also highly encouraged, and will be allowed to be worn during outside lessons. Students are encouraged to apply sunscreen in the mornings prior to coming to school. Application of sunscreen is highly encouraged prior to HPE lessons. Students can bring along their own sunscreen (roll on type preferred) to reapply during the day.

LOST PROPERTY

Parents, please ensure that all items that your child brings to school are **clearly named**. This includes **all** items of their uniform, lunch boxes, drink bottles, bathers, towels, goggles, etc. Some lost property is located in the sickbay and all items that are named are promptly returned to their respective owners. Any unnamed property is kept for a short period of time before being sent to either a local opportunity shop or the second hand uniform shop as per the school's Lost Property Policy.

ICT NEWS DAVE HALL



Today, students will be bringing home information regarding digital technology use at our school.

I ask that parents read the information carefully with their child/ren and return the Student Agreement/Parent, Guardian, Carer Acknowledgement page to their

classroom teacher by next **Monday February 3**. Students will not have access to technology school wide until the consent forms are returned to teachers.

FROM THE ART ROOM LOUISE COOPER ART



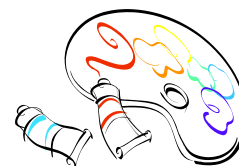
Welcome back for 2025 and another fabulous year for creativity, art learning and fun.

I am looking forward to working with FC, FB, JF, JN, JW, MC, MM, SD, SS and SC for the first half of this year. All students will need a named art smock. Art smocks can

be store bought or an old 'adult sized' shirt is a great option also.

The Gippsland Art Gallery runs the "Art in the wild" program which one or two of the above classes will partake this term (dependent on date time and availability). An email via Compass will be sent out when this is confirmed.

Looking forward to seeing lots of amazing art creations this year.



BREAKFAST CLUB

starts next Monday February 3
open every
Monday, Wednesday & Friday
morning from 8.40am
all students welcome

School Saving Bonus Reminder and Support

The Victorian Government is delivering the School Saving Bonus (SSB) – a one-off support of \$400 for eligible government school students from Prep to Year 12 in 2025.

The SSB helps families cover the cost of uniforms, textbooks, excursions, activities and more.

Most families have now received their SSB code(s). I encourage you to take advantage of this government support.

To learn more about the SSB online system, download the step-by-step [System guide for parents and carers \(DOCX, 945KB\)](#) or watch this [School Saving Bonus video](#). [System guide translations](#) are also available in 14 languages.

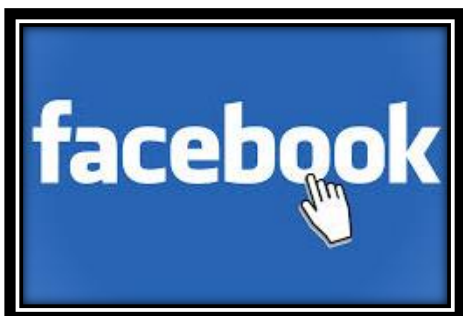
If you would like to use your bonus for school activities, you can allocate some or all of the bonus using the [School Saving Bonus online system](#). If you have only recently completed your enrolment into the Victorian government school system you can expect to receive your SSB code(s) in the coming weeks.

If you have transferred to our school from another Victorian government school, any remaining funds on your SSB code(s) will soon be available to use at our approved school suppliers. We request your patience as this change is processed.

The Department of Education has established a dedicated contact centre to support the SSB. The contact centre can be reached by:

- completing the [School Saving Bonus enquiry form](#)
- calling 1800 338 663, between 8:30 am and 4:30 pm on weekdays.

Don't forget to 'like' our school's Facebook page



Student absence notification
Compass app OR sale.ps@education.vic.gov.au OR
Phone call to school office

Whole School Assembly 3.00pm every Friday

School Uniform available from
JSM, Macarthur Street, Sale

School Supervision – students are supervised between
the hours of 8.45am and 3.30pm

Second Hand Uniform Sales
at the school office

FINANCIAL ASSISTANCE INFORMATION FOR PARENTS

Every Victorian child should have access to the world of learning opportunities that exist beyond the classroom. The Camps, Sports and Excursions Fund helps ensure that no student will miss out on the opportunity to join their classmates for important, educational and fun activities. It is part of making Victoria the Education State and the Government's commitment to breaking the link between a student's background and their outcomes.

CAMPS, SPORTS & EXCURSIONS FUND (CSEF)

School camps provide children with inspiring experiences in the great outdoors. Excursions encourage a deeper understanding of how the world works while sports teach teamwork, discipline and leadership. All are a part of a healthy curriculum.

CSEF is provided by the Victorian Government to assist eligible families to cover the costs of school trips, camps and sporting activities.

If you hold a valid means-tested concession card or are a temporary foster parent, you may be eligible for CSEF. A special consideration category also exists for asylum seeker and refugee families. The allowance is paid to the school to use towards expenses relating to camps, excursions or sporting activities for the benefit of your child.

The annual CSEF amount per student is:

- \$150 for primary school students
- \$250 for secondary school students

MORE INFORMATION

For more information about CSEF visit:

<https://www.education.vic.gov.au/about/programs/Pages/csef.aspx>

HOW TO APPLY

New applicants should contact the school office to obtain a CSEF application form or download from the website below.

If you applied for CSEF at your child's school last year, you do not need to complete an application form this year unless there has been a change in your family circumstances.

You only need to complete an application form if any of the following changes have occurred:

- **new student enrolments;** your child has started or changed schools this year.
- **changed family circumstances;** such as a change of custody, change of name, concession card number, or new siblings commencing this year.

Check with the school office if you are unsure.



Camps, Sports and Excursions Fund APPLICATION Form

School Name

School REF ID

Parent/legal guardian details

Surname _____

First name _____

Address _____

Town/suburb _____ State _____ Postcode _____

Contact number _____

Centrelink pensioner concession OR Health care card number (CRN)

- - - OR

Foster parent* OR Veterans affairs pensioner (Gold [Card](#))**

*Foster Parents must provide a copy of the temporary care order letter from the Victorian Department of Families, Fairness and Housing (DFFH).

**Applicants must provide a copy of the Veteran Affairs Gold card.

Student details

Child's surname	Child's first name	Student ID	Date of birth (dd/mm/yyyy)	Year level

I authorise the Victorian Department of Education (DE) to use Centrelink Confirmation [eServices](#) to perform an enquiry about my Centrelink customer details and concession card status to enable the business to determine if I qualify for a concession, rebate or service. I also authorise the Victorian Department of Families, Fairness and Housing (DFFH) to provide the results of any enquiry to DE regarding temporary care orders.

I understand that:

- DFFH or Centrelink will use information I have provided to DE to confirm my eligibility for the Camps, Sports and Excursions Fund and will disclose to DE personal information including my name, address, payment and concession card type and status.
- This consent, once signed, remains valid while my child is enrolled at a registered Victorian school unless I withdraw it by contacting the school.
- I can obtain proof of my circumstances/details from DFFH and provide it to my child's school so that my eligibility for the Camps, Sports and Excursions Fund can be determined.
- If I withdraw my consent or do not alternatively provide proof of my circumstances/details, I may not be eligible for the Camps, Sports and Excursions Fund provided by DE.
- Information regarding my eligibility for the Camps, Sports and Excursions Fund may be disclosed to DFFH and/or State Schools Relief for the purpose of evaluating concession card services or confirming eligibility for assistance.

You can request access to the personal information that we hold about you, and to request that any errors be corrected, by contacting your child's school.

Signature of applicant _____ Date ____ / ____ / ____

Camps, Sports and Excursions fund eligibility

Below are the criteria used to determine a student's eligibility for the Camps, Sports and Excursions Fund (CSEF).

Criteria 1 – Eligibility

To be eligible* for the fund, a mature minor of sixteen years of age or over, a parent or legal guardian of a student attending a registered Government or non-government Victorian primary or secondary school must:

- on the first day of Term one; or
 - on the first day of Term two.
- a) Be an eligible beneficiary within the meaning of the State Concessions Act 2004, that is, be a holder of Veterans Affairs Gold Card or be an eligible Centrelink Health Care Card (HCC) or Pensioner Concession Card (PCC) holder; or
 - b) Be a temporary foster parent; and
 - c) Submit an application to the school by the due date.

* A special consideration eligibility category also exists. For more information, see: [Camps, Sports and Excursions Fund \(CSEF\): Eligibility | education.vic.gov.au](https://www.education.vic.gov.au/csef/eligibility)

Mature minors or parents who receive a Carer Allowance on behalf of a child, or any other benefit or allowance not income tested by Centrelink, are not eligible for the CSEF unless they also comply with one of (a) or (b) above.

Criteria 2 - Be of school age and attend school in Victoria

School is compulsory for all Victorian children aged between six and seventeen years of age inclusive.

For the purposes of CSEF, students may be eligible for assistance if they attend a Victorian registered primary or secondary school. Typically, these students are aged between five and eighteen years inclusive.

CSEF is not payable to students' attending pre-school, kindergarten, home schooling, or TAFE.

Eligibility Date

For concession card holders, CSEF eligibility will be subject to the parent/legal guardian's concession card being successfully validated with Centrelink (see [Camps, Sports and Excursions Fund \(CSEF\): Policy | education.vic.gov.au](https://www.education.vic.gov.au/csef/policy)).

Payment amounts

CSEF payment amount

The CSEF is an annual payment to the school to be used towards camps, sports and/or excursion expenses for the benefit of the eligible student.

The CSEF is paid directly the school and will be allocated by the school towards camps, sports and/or excursion costs for your child. Please refer to the policy for the current rates.

For **ungraded students**, the rate payable is determined by the student's date of birth. For more information, see: [Camps, Sports and Excursions Fund \(CSEF\): Payment amounts | education.vic.gov.au](https://www.education.vic.gov.au/csef/payment-amounts)

Foundation and Year 7 government school students who are CSEF recipients are also eligible for a uniform voucher. Schools are required to make applications on behalf of parents, so please register your interest at the school.

How to complete the application form

NOTE: ALL SECTIONS MUST BE COMPLETED BY PARENT/LEGAL GUARDIAN

1. Complete the PARENT/LEGAL GUARDIAN DETAILS section.
Make sure that the Surname, First Name, and Customer Reference Number (CRN) details match those on your concession card. You will also need to provide your concession card to the school.
If you are claiming as a Foster Parent or a Veteran Affairs Pensioner, you will need to provide a copy of documentation confirming your status as a temporary Foster Parent or provide your Veteran Affairs Pensioner Gold card to the school.
2. Complete the STUDENT/S DETAILS section for students at this school.
3. Sign and date the form and return it to the school office as soon as possible.

CSEF payments cannot be claimed retrospectively for prior years.

Queries relating to CSEF eligibility and payments should be directed to the school.

2025 LOCAL EXCURSION FORM

Thank you to the families who have returned the

2025 Local Excursion Form.

For those families who have not returned theirs, a named copy will be sent home this week for completion and return to the school office.

Students without a signed consent form will not be able to attend any local excursions.

Maffra Dramatic Society Inc.



Little Red Riding Hood
By Tina & Robert Burbidge

Pantomime

Friday 21 February 7.30pm	Friday 28 February 7.30pm
Saturday 22 February 7.30pm	Saturday 1 March 2pm
Sunday 23 February 2pm	Sunday 2 March 2pm

Maffra Memorial Hall
www.trybooking.com/CXKNC





Back to school checklist for kids with asthma

The start of the school year can be busy enough without the added concern about your child's asthma striking them in the classroom or playground.

But that's just the time when kids are most at risk of asthma flare-ups, with a spike in asthma attacks and hospitalisation seen during the first few weeks of the school term every year.

When children return to classrooms, factors such as stress, a change of environment or allergens and less strict asthma management over the holidays can trigger asthma. A new set of classmates can also bring a new batch of cold and flu bugs, which are often the culprits behind asthma flare-ups.



© 2019 National Asthma Council Australia

Disclaimer: It is important to note that information contained in this fact sheet is not intended to replace professional medical advice. Any questions regarding a medical diagnosis or treatment should be directed to a medical practitioner.

nationalasthma.org.au astmahandbook.org.au

What can you do?

Reduce the chances of this happening for your child by following these simple steps.

At home:

- Have an up-to-date written asthma action plan prepared by your doctor
- Ensure your child gets back into their asthma routine before the school year starts, including taking preventer medications every day if prescribed
- Ask your pharmacist to check that your child is using their puffer properly (if they're old enough to use it by themselves) or visit our How-to Video library on inhaler use
- Have a check-up before the school year ramps up or sports lessons start to make sure things are going as well as can be
- Pack a spare reliever puffer and spacer in your child's school bag, checking that the puffer isn't empty or out of date.

At school:

- Ensure your child feels comfortable asking for help or telling their teacher if they are getting asthma symptoms
- Give the school and/or childcare a copy of your child's asthma action plan and tell teachers and staff if your child requires help using their puffer
- Talk to school administrators about possible asthma triggers and whether staff members receive training on how to recognise and respond to asthma symptoms.

Taking these preventative measures before and during the first few weeks of school can go a long way to helping keep your child well and out of hospital.